

ONE-CARE[®]

SAFETY LANCETS **OPTI**



Blood micro-sampling has never been easier...

Easy

Long safety tab for easy twist off and pull out



Comfortable

Dual spring safety activation mechanism for enhanced patient's comfort

Ergonomic

Ergonomic T-shape body for comfortable grip

SAFE

- All needles are gamma-sterilized and protected with a sterility tab
- Fully enclosed housing ensures that needle is hidden before and after use
- Single-use mechanism prevents sharps injuries and reuse of the device

COMFORTABLE

- Silicone-coated, ultra-thin needles ideally positioned during skin penetration with double-spring mechanism to reduce vibrations
- Color-coded product versions to meet specific blood sample requirements and address a variety of patient skin types
- Ergonomic design for comfortable grip and secure blood collection

SIMPLE

- Easy to use, intuitive operation in 3 steps only, no pre-loading required
- Long safety tab designed for easy removal - simply twist off the tab and pull it out
- Optimal skin contact area for precise positioning on the desired test site and adequate blood flow



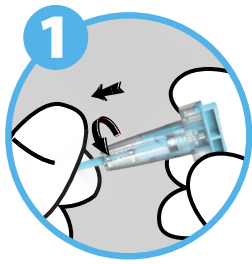
Every product detail designed with ease of use and comfort in mind

INSTRUCTIONS FOR USE

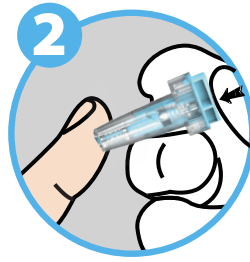
Blood micro-sampling has never been easier ...

ONE-CARE®
SAFETY LANCETS **OPTI**

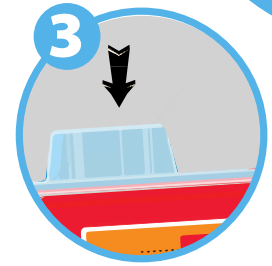
- Intuitive design with only 3 simple steps.



TWIST OFF and
PULL OUT the safety cap



Place ONE-CARE® PRO lancet
on the test site and press the top
push button to activate the device



DISPOSE of lancet into
sharps container

TEST SITE PREPARATION AND SELECTION

Test Sites

Prick the side of the
finger, not the pad



- Patient should wash hands with warm water and soap before blood collection
- Test site should be disinfected with alcohol swab
- Blood collection should be performed on the sides of the fingertip, not the pads
- Index, middle and ring fingers are recommended
- Apply intermittent pressure on the finger below test site to enhance blood flow if needed

PRODUCT SELECTION CHART

Available in ten color-coded versions to meet different test blood flow requirements and address a variety of patient skin types.

REF.	DIAMETER (G) / DEPTH (mm/in)	COLOR	PACKAGING
1031	30G / 1.5 mm		200 pcs/box 3,600 pcs / case
1032	28G / 1.6 mm		200 pcs/box 3,600 pcs / case
1033	25G / 1.6 mm		200 pcs/box 3,600 pcs / case
1034	23G / 1.8 mm		200 pcs/box 3,600 pcs / case
1035	21G / 1.8 mm		200 pcs/box 3,600 pcs / case
1036	21G / 2.4 mm		200 pcs/box 3,600 pcs / case
1037	21G / 2.8 mm		200 pcs/box 3,600 pcs / case
1038	17G Blade / 1.0 mm		200 pcs/box 3,600 pcs / case
1039	17G Blade / 1.5 mm		200 pcs/box 3,600 pcs / case
1010	17G Blade / 2.0 mm		200 pcs/box 3,600 pcs / case

Distributed in the US by:

MediVena
1 Glenlake Parkway, Ste 700
Atlanta, GA 30328, USA

+1 404 514 2586

info@medivena.com
www.medivena.com

CUSTOMER SERVICE TOLL
FREE NUMBER: 888 270 6457

EU Importer:

MediVena Sp. z o.o.
Al. Jana Pawla II 27
00-867 Warsaw, Poland

+48 661 920 142

info@medivena.com
www.medivena.com

MediVena®
inspired by innovation

