

# ONE-CARE<sup>®</sup>

SAFETY WINGED BLOOD COLLECTION SETS

**ERGO-SHIELD**



*Ergonomic and cost-effective solution ...*

## DEPF-free, low memory and flexible tubing

assists in handling and preserves the blood chemical and physiological composition

## Transparent Tube Holder

for better visibility of collection tubes filling up with blood, tube holders provided separately or pre-attached



## Tri-bevel, ultra-sharp, electropolished and lubricated needle

for patient comfort



## Ergonomic wing design

permits improved positioning during application



## Ergonomic Safety Shield

enables one-hand activation of safety mechanism, audible click confirms that needle is securely locked

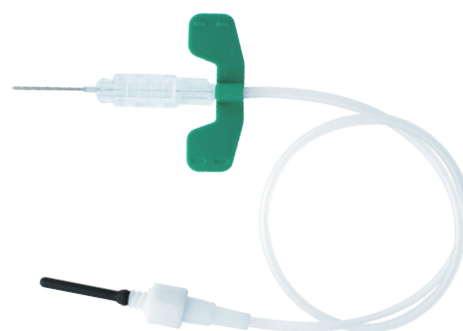
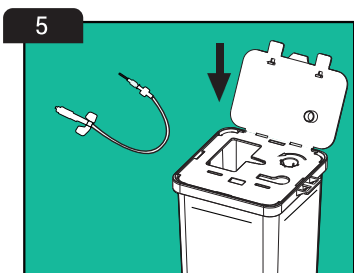
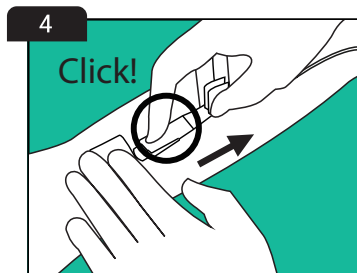
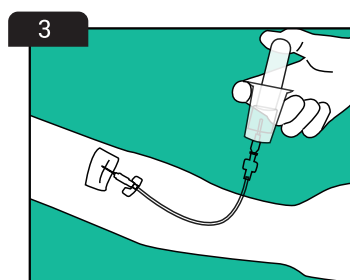
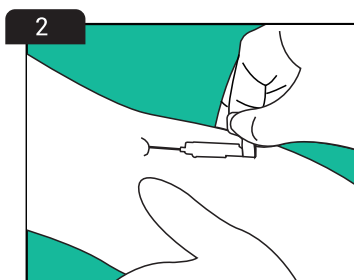
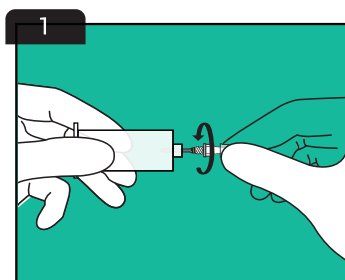


# ONE-CARE<sup>®</sup>

SAFETY WINGED BLOOD COLLECTION SETS  
LUER ADAPTER **ERGO-SHIELD**

## INSTRUCTIONS FOR USE

- Intuitive handling with simple steps.



## ORDERING INFORMATION

- Available in different needle configurations and with/without pre-attached tube holders:

### Without Holders

REF	PRODUCT	COLOR	PACKAGING
5051	ONE-CARE® ERGO-SHIELD Safety Blood Collection Winged Sets 25G x 3/4" , Luer Adapter, 12" Tube	Orange	100 pcs / box 800 pcs / case
5052	ONE-CARE® ERGO-SHIELD Safety Blood Collection Winged Sets 23G x 3/4" , Luer Adapter, 12" Tube	Blue	100 pcs / box 800 pcs / case
5053	ONE-CARE® ERGO-SHIELD Safety Blood Collection Winged Sets 21G x 3/4" , Luer Adapter, 12" Tube	Green	100 pcs / box 800 pcs / case

### With Tube Holders

REF	PRODUCT	COLOR	PACKAGING
5051-H	ONE-CARE® ERGO-SHIELD Safety Blood Collection Winged Sets 25G x 3/4" , Pre-Attached Holder, 12" Tube	Orange	50 pcs / box 400 pcs / case
5052-H	ONE-CARE® ERGO-SHIELD Safety Blood Collection Winged Sets 23G x 3/4" , Pre-Attached Holder, 12" Tube	Blue	50 pcs / box 400 pcs / case
5053-H	ONE-CARE® ERGO-SHIELD Safety Blood Collection Winged Sets 21G x 3/4" , Pre-Attached Holder, 12" Tube	Green	50 pcs / box 400 pcs / case

WWW.ONE-CARE.COM

**MediVena**<sup>®</sup>  
inspired by innovation

[www.medivena.com](http://www.medivena.com)

**AMERICAS:**  
MediVena  
1 Glenlake Parkway, Ste 700, Atlanta, GA 30328, USA  
+1 404 514 2586 © info@medivena.com  
**CUSTOMER SERVICE TOLL FREE: 888 270 6457**

**EUROPE:**  
MediVena Sp. z o.o.  
Al. Jana Pawła II 27, 00-867 Warsaw, POLAND  
+48 695 995 700

