

ONE-CARE[®]

INSULIN SAFETY SYRINGES **OPTI**



Your Ideal Safety Syringes with Fixed Needles!

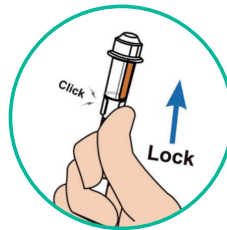
- **Convenient**

Easy pull-out

- **Comfortable**

Sharp and lubricated needles for gentle insertion

- **One-Step and One-Hand Activation**



- **LDV (Low Dead Volume)**

Designed to reduce medical waste (<0.035ml)

- **Precise graduation**

marking for improved visibility and precise dosing

- **Thin-wall syringe barrel**

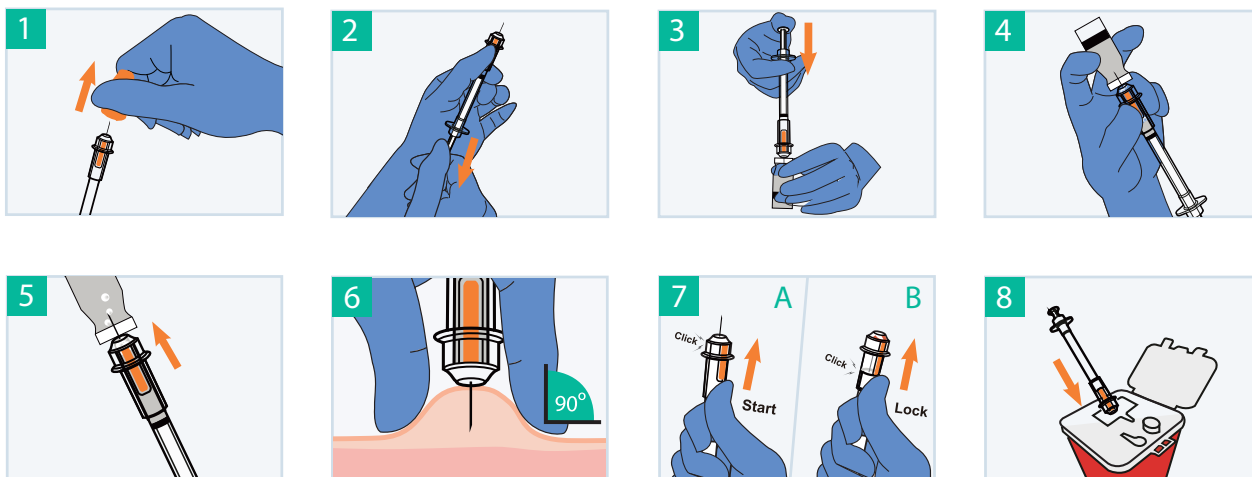
for smooth injection and reduced consumption of plastic

ONE-CARE[®]

INSULIN SAFETY SYRINGES **OPTI**

INSTRUCTIONS FOR USE

- Intuitive handling with simple steps.



ORDERING INFORMATION

- Available in different syringe sizes:

REF	SYRINGE SIZE	NEEDLE	COLOR	PACKAGING
2141	1 mL	29G x 1/2" 0.33 x 12.7 mm	■	100 pcs / box 800 pcs / case
2142	0.5 mL	29G x 1/2" 0.33 x 12.7 mm	■	100 pcs / box 800 pcs / case

WWW.ONE-CARE.COM

MediVena[®]
inspired by innovation

www.medivena.com

AMERICAS:
MediVena
1 Glenlake Parkway, Ste 700, Atlanta, GA 30328, USA
+1 404 514 2586 info@medivena.com
CUSTOMER SERVICE TOLL FREE: 888 270 6457

EUROPE:
MediVena Sp. z o.o.
Al. Jana Pawła II 27, 00-867 Warsaw, POLAND
+48 695 995 700

