

# ONE-CARE<sup>®</sup>

INSULIN SAFETY SYRINGES **OPTI**



*Your Ideal Safety Syringes with Fixed Needles!*

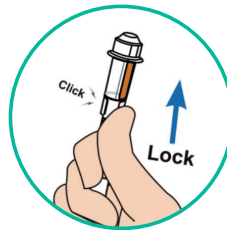
- **Convenient**

Easy twist-off and put-out safety tab

- **Comfortable**

Sharp and lubricated needles for gentle insertion

- **One-Step and One-Hand Activation**



- **LDV (Low Dead Volume)**

Designed to reduce medical waste (<0.035ml)

- **Precise graduation**

marking for improved visibility and precise dosing

- **Thin-wall syringe barrel**

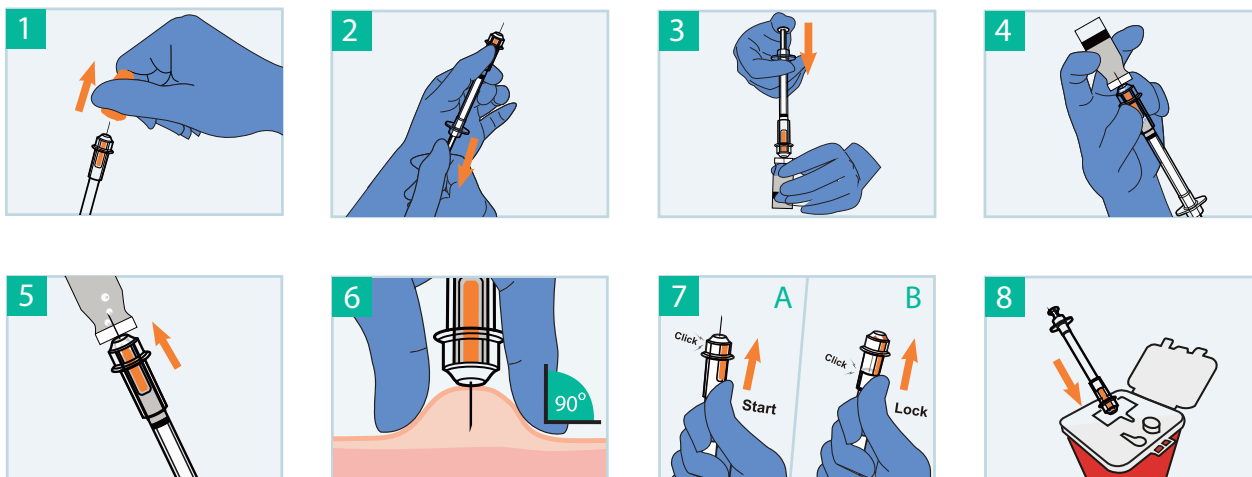
for smooth injection and reduced consumption of plastic

**ONE-CARE<sup>®</sup>**

INSULIN SAFETY SYRINGES **OPTI**

## INSTRUCTIONS FOR USE

- Intuitive handling with simple steps.



## ORDERING INFORMATION

- Available in different syringe sizes:

REF	SYRINGE SIZE	NEEDLE	COLOR	PACKAGING
2141	1 mL	29G x 1/2"   0.33 x 12.7 mm	■	100 pcs / box 800 pcs / case
2142	0.5 mL	29G x 1/2"   0.33 x 12.7 mm	■	100 pcs / box 800 pcs / case

WWW.ONE-CARE.COM

