

ONE-CARE[®]

SAFETY LANCETS



Blood micro-sampling has never been easier...

Ergonomic

Ergonomic body for comfortable grip

Easy

Wide cap for easy twist off



Comfortable

Dual spring safety activation mechanism for enhanced patient's comfort

SAFE

- Single-use mechanism prevents sharps injuries and reuse of the device
- Fully enclosed housing ensures that needle is hidden before and after use
- All lancets are Gamma-sterilized and protected with a sterility tab

COMFORTABLE

- Silicone-coated, ultra-thin needles ideally positioned during skin penetration with double-spring mechanism to reduce vibrations
- Color-coded product versions to meet specific blood sample requirements and address a variety of patient skin types
- Ergonomic design for comfortable grip and secure blood collection

SIMPLE

- Easy to use, intuitive operation in 3 steps only, no pre-loading required
- Wide safety cap designed for easy removal - simply twist off the cap and pull it out
- Optimal skin contact area for precise positioning on the desired test site and adequate blood flow

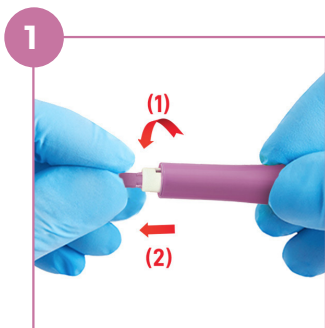


Every product detail designed with ease of use and comfort in mind

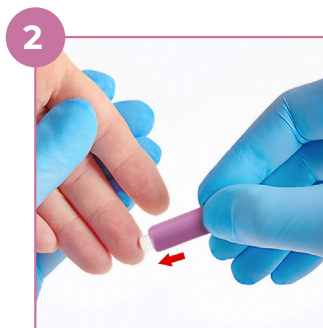


INSTRUCTIONS FOR USE

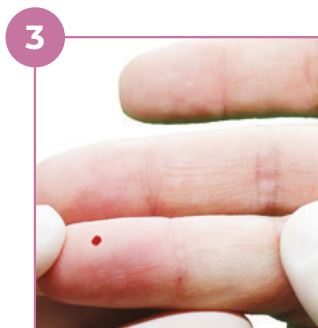
- Intuitive design with only 4 simple steps.
Blood micro-sampling has never been easier...



Twist Off and **Pull Out** the protective cap



Press against test site to activate the device



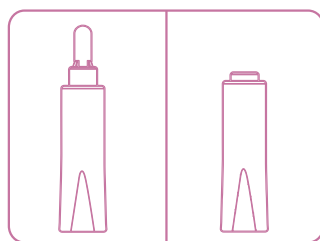
Gently apply intermittent pressure near the puncture site **to obtain** the required blood volume



Collect blood sample and **Discard** the device into sharps container

VISUAL ACTIVATION INDICATOR

Safety tab is removed and white shield remains permanently depressed after use.



BEFORE USE

AFTER USE

Test Sites
Prick the side of the finger, not the pad



TEST SITE PREPARATION AND SELECTION

- Patient should wash hands with warm water and soap before blood collection.
- Test site should be disinfected with alcohol swab.
- Blood collection should be performed on the sides of the fingertip, not the pads.
- Index, middle and ring fingers are recommended.
- Apply intermittent pressure on the finger below test site to enhance blood flow if needed.

PRODUCT SELECTION CHART

Available in seven color-coded versions to meet different test blood flow requirements and address a variety of patient skin types.

REF.	VERSION	DIAMETER (G) / DEPTH (mm)	COLOR	PACKAGING
1101	Micro Flow	30G / 1.5 mm		100 pcs/box 2,000 pcs / case
1102	Mini Flow	28G / 1.8 mm		100 pcs/box 2,000 pcs / case
1103	Low Flow	26G / 1.8 mm		100 pcs/box 2,000 pcs / case
1104	Normal Flow	23G / 1.8 mm		100 pcs/box 2,000 pcs / case
1105	Universal Flow	21G / 1.8 mm		100 pcs/box 2,000 pcs / case
1106	High Flow	21G / 2.4 mm		100 pcs/box 2,000 pcs / case
1107	Max Flow	Blade 18G / 1.8 mm		100 pcs/box 2,000 pcs / case

Americas

USA
MediVena
1 Glenlake Parkway, Ste 700
Atlanta, GA 30328, USA
+1 404 422 1513
info@medivena.com
www.medivena.com

Europe

Poland
MediVena Sp. z o.o.
Al. Jana Pawła II 27
00-867 Warsaw, Poland
+48 661 920 142
info@medivena.com
www.medivena.com

