

# ONE-CARE<sup>®</sup>

SAFETY BLOOD COLLECTION NEEDLES



*Intuitive handling with simple steps...*

## Widely accepted safety solution ●

the side-shield flipped over the needle - minimal training required



**Ultra-sharp, lubricated needle**  
for patient comfort



## High Fill Rate

Thin-Wall Technology for optimal flow and quick blood collection

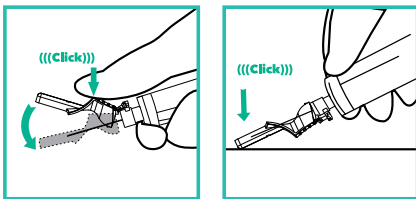
## Ergonomic design

concaved shield to fit thumb shape and textured surface to improve grip

## Universal Luer

allows for universal and tight fit to tube holders and multi-sampling

## Safety shield activation methods:



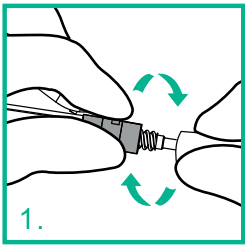
- One-hand operation for convenience – thumb or surface activation
- Audible “Click” to indicate that safety shield is activated and the needle is permanently locked



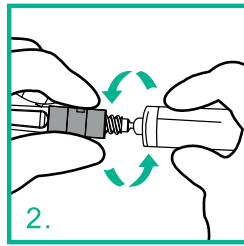
## Transparent Tube Holder

- improved visibility of collection tubes filling up with blood,
- tube holders provided separately or pre-attached

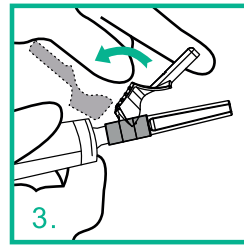
## INSTRUCTIONS FOR USE



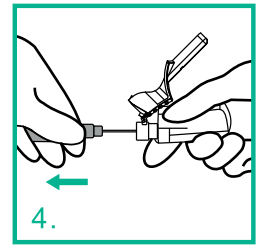
1. Twist the transparent protective cap counter-clockwise to break the seal and pull it straight out to uncover the back-end needle.



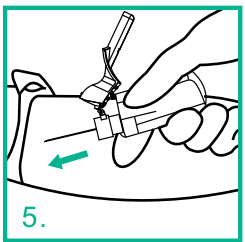
2. Attach the adapter of ONE-CARE Safety Blood Collection Needle to the tube holder through luer connection.



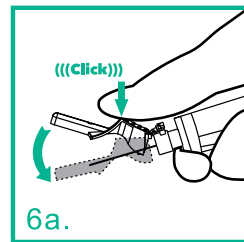
3. Flip safety shield back to expose the colored protective cap.



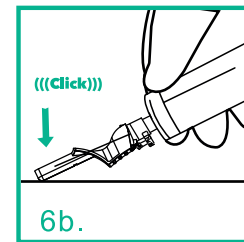
4. Remove the colored protective cap to expose the hypodermic needle.



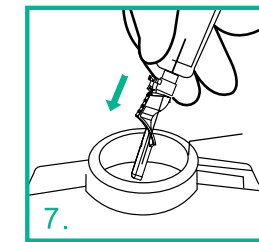
5. Perform venipuncture and collect blood sample according to your facility's policy. The blood should flow into the vacuum blood collection tube based on pressure difference.



6a. Gently remove needle from vein and flip the safety shield with the finger (thumb) to cover the needle until audible "Click" is heard, which indicates that the needle is locked permanently.



6b. Alternatively, press the safety shield against surface to lock the needle.



7. Dispose of all used materials in an appropriate sharps container as per your facility's policy.



## ORDERING INFORMATION

■ Available in 3 different needle configuration and with/without pre-attached tube holders:

	CODE	NEEDLE (DIAMETER x LENGTH)	COLOR	PACKAGING
<p>Blood Collection Safety Needle</p>	5020	ONE-CARE® Safety Blood Collection Needles - without Holder 22G x 1 1/4"	Black	48 pcs / box 50 bx (2,400 pcs) / case
	5021	ONE-CARE® Safety Blood Collection Needles - without Holder 21G x 1 1/4"	Green	48 pcs / box 50 bx (2,400 pcs) / case
	5022	ONE-CARE® Safety Blood Collection Needles - without Holder 20G x 1 1/4"	Yellow	48 pcs / box 50 bx (2,400 pcs) / case
<p>Blood Collection Safety Needle with Pre-Attached Holder</p>	5020-H	ONE-CARE® Safety Blood Collection Needles - with Holder 22G x 1 1/4"	Black	100 pcs / box 5 bx (500 pcs) / case
	5021-H	ONE-CARE® Safety Blood Collection Needles - with Holder 21G x 1 1/4"	Green	100 pcs / box 5 bx (500 pcs) / case
	5022-H	ONE-CARE® Safety Blood Collection Needles - with Holder 20G x 1 1/4"	Yellow	100 pcs / box 5 bx (500 pcs) / case

WWW.ONE-CARE.COM

**MediVena®**  
inspired by innovation

[www.medivena.com](http://www.medivena.com)

**AMERICAS:**  
MediVena  
1 Glenlake Parkway, Ste 700, Atlanta, GA 30328, USA  
+1 404 514 2586 info@medivena.com  
**CUSTOMER SERVICE TOLL FREE: 888 270 6457**

**EUROPE:**  
MediVena Sp. z o.o.  
Al. Jana Pawla II 27, 00-867 Warsaw, POLAND  
+48 695 995 700

